



27" Truck Box with 5 Drawers



Part No: D069003

Product Features

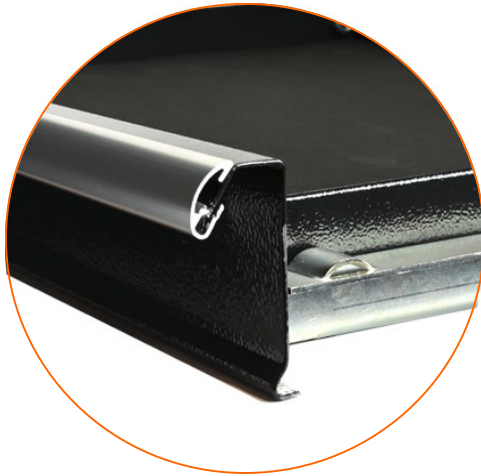
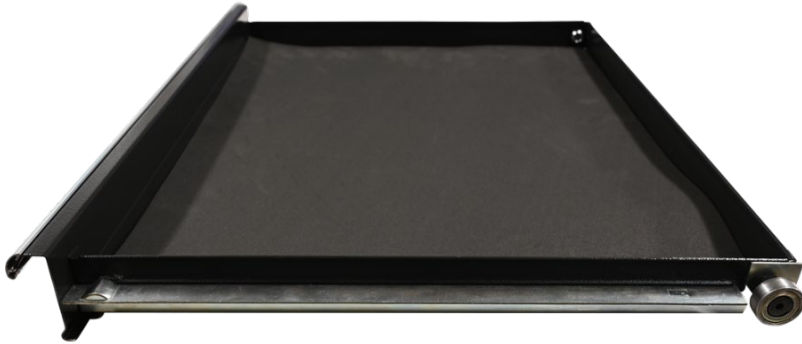
Heavy-duty Sealed Bearing Slides



- Full-extension sealed bearing slides on all drawers provide durable and superior performance.
- The seal bearing slides with simplified structure is more robust and easier to install and remove.
- Load Rating 132 lbs. Per Drawer.

RESULT! Greater capacity to store
heavy tools & accessories!

Heavy-duty Drawers



- Another example of truly professional grade design; truck box features 18 gauge (1.2 mm) steel drawers.
- In addition to thicker steel, the sides of each drawer are "folded in" providing added strength and stiffness.

RESULT! Users can store even greater amounts of product in each drawer!

Heavy Gauge Steel Construction



- Heavy-duty 18 gauge (1.2 mm) steel frame provides excellent stiffness and support when the truck box is heavily loaded.
- Two heavy duty-lifting handles with 90° stop allows for easy lifting of box.
- Ideal for the back of vehicles.
- Ideal for mobile service personnel.

RESULT! Users can store greater amounts of product in the truck box.

Heavy Duty Lift Handle & Robust Lock System



- Heavy duty front handle for easy opening.



- Flat key locking mechanism provides protection against theft and accidental opening.



Features & Benefits

- Includes 4 rubber foot pads on underside provides extra protection.
- Sealed drop front cover for weather / dust protection.
- Frame and drawers are made of 18-gauge (1.2 mm) steel for superior durability.
- Full extension sealed bearing slides on all drawers.
- Drawer liners included.
- Two heavy-duty lifting handles with 90° stop for quick and easy lifting of box.
- Large heavy duty front handle for easy opening and closing.
- Black powder coat paint finish:
 - Resists fading, will not chip or peel while preventing damage from solvents.
 - Easy to clean and maintain.
- Supersedes Gray part number 97505BL



Specifications & Pricing

| Specifications | D069003 |
|----------------------------------|----------------------------|
| Dimensions: | 27" W x 17½" D x 22" H |
| Net Weight (lbs.): | 120 |
| Storage Capacity (cubic Inches): | 6,500 |
| Drawer Capacity (lbs.): | 132 |
| Frame Steel Thickness: | 18 gauge |
| Drawer Steel Thickness: | 18 gauge |
| Stamped Drawers Bottoms: | Yes |
| Rolled - Over Drawer Edges: | Yes |
| Quantity of Drawers: | 5 |
| Slide Type: | Sealed Bearing |
| Drawer Liners Included: | Yes |
| 3 Drawers : | 22.75" W x 16" D x 2.25" H |
| 2 Drawers: | 22.75" W x 16" D x 4" H |
| Key Lock: | Flat Key |
| Spare Parts Support Available: | Yes |